

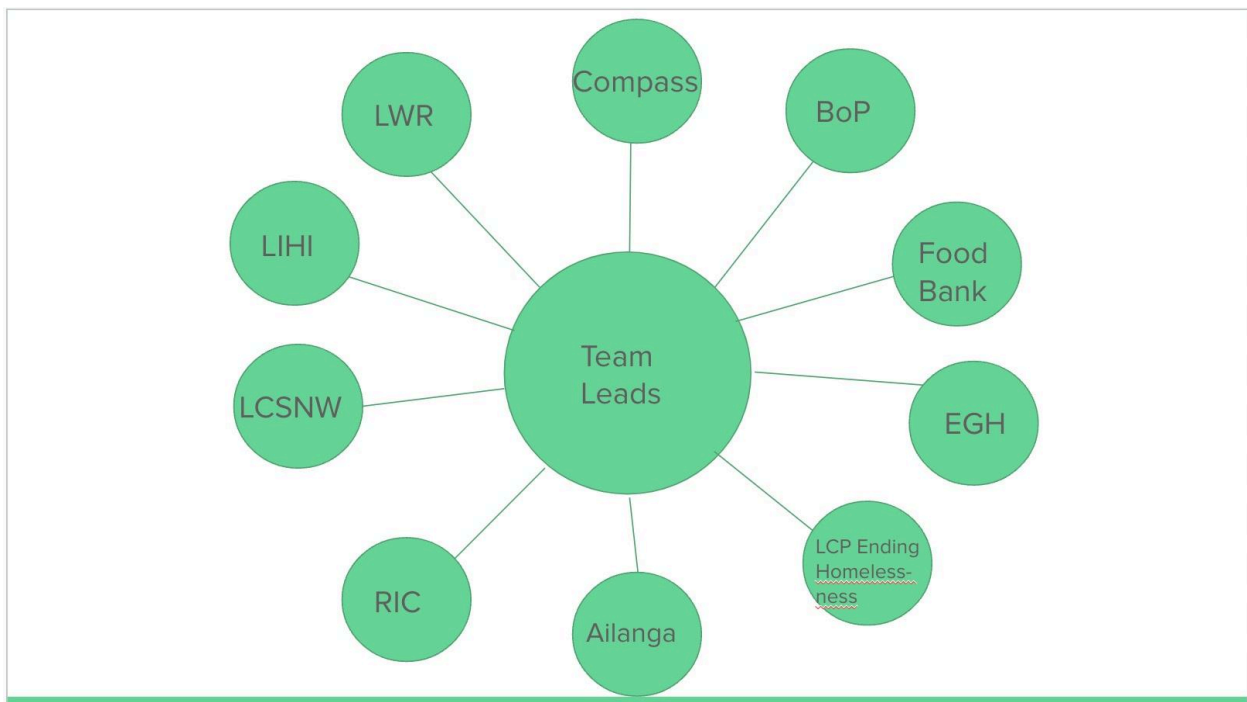
May 2024

With the sunshine peeking out for days at a time, the flowers bursting forth, and the sound of birds we feel the tangible signs of spring and new life blooming. The Easter promise is unveiled and the resurrection promise is deeply felt in these signs of Spring.

With this, the Annual Meeting in April brought exciting discussion and unveiling of the hard work of council leadership discernment, vision, and planning. It has not been only the council, but the consistent input and support of the congregation. After 18 months of intentional conversation, exploring different angles and options, and working with the budget, we feel strongly about engaging with solid lay leadership for further Community Engagement.

The ethos and roots of the Faith community are based in compassion, care, and service. Our mission statement says that we are “Followers of Christ who learn to love and live to serve.” This is true.

As we have been working on this Community Engagement Plan, I have spent many Sundays looking out at the congregation, reading through our membership list, and paying attention to how and when people serve. I recognize that every person...every person...serves in some way in the church and community. Again, it is our ethos but more importantly, it is our expression of faith in Jesus Christ.



In an effort to engage people with one another and with the community, we have a leadership team that will be working to answer important questions, provide learning, and offer intentional opportunities for all ages to connect with our mission partners.

Your leadership team includes: Steve Arnold, Nancy Estill, Jamie Estill, Rick Friedhoff, Merle Harris, Holly Johnson, and Diane Machatka.

Some of the questions we will be approaching are:

- What kind of engagement/needs are desired by the partnership organization?
- What resources do we have to offer in response to those needs? (Skills, finances, time)
- What can we learn from the partner organizations? (Two-way discernment and service)
- What ages can and want to be involved?
- How do we highlight and rotate the focus of each organization through the church year?
- In what ways can we connect to other areas: e.g.) worship, prayers, highlights, story sharing, weekly email, etc.
- What communication is needed and how will it happen?

We have many different ages, abilities, interests, and possibilities for continuing to build bridges between the church community and the neighborhood community. As I said, not only is service and generosity part of the ethos and roots of the Faith community but Millennials and Gen Z highly connect with service and outreach--using their hands and hearts in the world as an expression of spirituality and form of worship.

The springboard will be our Local Mission Trip June 21-24. This is designed for all ages and to work with your energy levels and availability. It is a great opportunity to be introduced or re-introduced to our mission partners. Please sign up using the google form [CLICK HERE](#) so we can plan accordingly. There is no cost to participate and there will be ways to participate from home as well.

See below for the schedule of the Local Mission Trip.

Thank you for your consistent efforts within the church community and the community at large. Thank you for being the presence of Christ in the world. Thank you for your caring hearts and generous souls. Thank you for the compassion and love you bring to the world and together, we learn to love and live to serve.

In deep peace,  
Pastor Shannyn

# SCHEDULE

## June 21:

Daytime: Seattle Activities/Sightseeing w/ WI group  
Late afternoon walking tour of the neighborhood  
Dinner at Faith  
Evening Panel Discussion & Service Introduction Activity  
Kerry Park Sunset Visit

## June 22:

Morning: Lutheran Community Services NW  
Early Afternoon: University Food Bank  
Mid-Late Afternoon: CHOP/Capitol Hill Tour  
Evening Picnic Cookout at Pastor Shannyn's

## June 23:

Morning: Sunday Morning Worship  
Midday: Potluck Lunch  
Midday: Pack lunches/Meals/Kits for GLA, The Oaks, & LIHI  
Afternoon: Meal delivery in small groups &  
Food Bank Amazing Race Activity  
Evening: Dinner & Mini hike OR Seattle area activity

## June 24:

Morning: Shelter Focus: Small group volunteer at  
Elizabeth Gregory House  
LIHI Tiny House  
The Oaks (Lake City Partners)  
God's Little Acre  
Afternoon: Bridge of Promise Volunteer, Bellevue & Kent  
Evening: Dinner and Sharing Activity